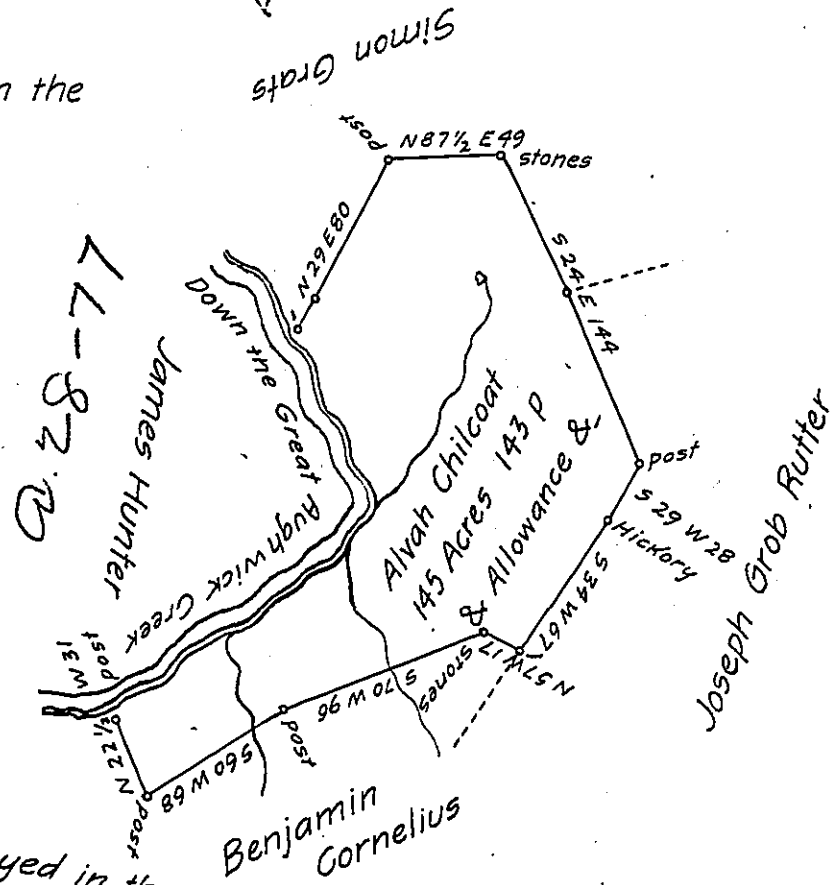


Courses & Distances down the  
great Aughwick Creek.

- N 65 1/2 E 29
- N 47 1/2 E 26
- N 36 1/2 E 27
- N 64 1/2 E 48
- N 28 1/2 E 16
- N 17 1/2 W 32
- N 2 1/2 E 30
- N 48 1/2 W 32



Said to be Surveyed in the name of  
James Hunter

Situate in Cromwell Township Huntingdon County Containing One hundred  
and Forty five Acres and One hundred and forty three perches and Allow-  
ance, &c. Surveyed February 9<sup>th</sup> 1853 in pursuance of a Warrant granted to  
Alvah Chilcoat dated ~~September 18<sup>th</sup>~~ December 18<sup>th</sup> 1851 for 142 Acres & 148  
perches &c. William Christy C.S.

To J. Porter Brawley Esq<sup>r</sup>  
Surveyor General of Pennsylvania.

IN TESTIMONY that the above is a copy of the original remaining on file in  
the Department of Internal Affairs of Pennsylvania, made  
conformably to an Act of Assembly approved the 16th day of  
February, 1833, I have hereunto set my Hand and caused  
the Seal of said Department to be affixed at Harrisburg,  
this twenty-sixth day of May 1904.

*Isaac P. Brown*  
Secretary of Internal Affairs.